

**NEW OPENABLE  
FLAT ROOF SKYLIGHTS**

**VELUX®**

# World-leading skylights and roof windows

Product information and price list 2018



**STREAMLINED  
EXTERIOR**



**OUTSTANDING LIGHT  
TRANSMITTANCE**



**SOLAR-POWERED  
SKYLIGHTS**



**TOUCH-SCREEN  
CONTROLLER**



**OPENABLE FLAT ROOF  
SKYLIGHTS**



**HONEYCOMB  
BLIND**

Throughout the construction industry, VELUX is a by-word for quality, a reputation that has been painstakingly built up for more than 35 years in Australia and for over 75 years around the world.

Perfectly designed to withstand the world's harshest climatic conditions, all VELUX products are of the highest quality and will perform superbly for a lifetime of faultless service.



Take a look through this guide and judge for yourself. For range, quality, value, guarantees, delivery and service – VELUX is a world leader.

## Guaranteed to last...

**10 Year Warranty**  
on all skylights, roof windows and flashings.

**3 Year Warranty**  
on accessories, including electric controls & blinds.

VELUX Skylights and Roof Windows are included in the National Energy Rating programme (AccuRate) as well as state run programmes such as Basix & FirstRate.

### Tested and approved to Australian Standards

When installing VELUX Skylights 3m or higher above floor level, 2004 High Performance glazing must be used to comply with Australian Standard AS 1288 (i.e. sloped overhead glazing must be laminated glass).

#### Surpasses Australian tests for skylights

<p>AS4285 SKYLIGHTS</p> <p>Cyclonic<sup>†</sup> &amp; Non-Cyclonic</p>	<p>AS1288 OVERHEAD GLAZING</p> <p>Laminated inner pane<sup>†</sup></p>	<p>AS3959 BUSHFIRE*</p> <p>Attack Level 40</p>
--	--	--

#### Window Energy Rating Scheme (WERS)

(MAXIMUM 5 ON WERS SUMMER RATING)



#### Building Code compliance

All VELUX Skylights/Roof Windows (except Sun Tunnels) are deemed non-combustible and thereby comply with BCA Fire Separation requirements i.e. suitable for use within 900mm of a boundary for buildings of Class 1 & 10 (typical residential dwelling)\*.

\* CSIRO assessment report available on request. VELUX recommends consultation with relevant authority before work commences. Opening models assessed in closed position.

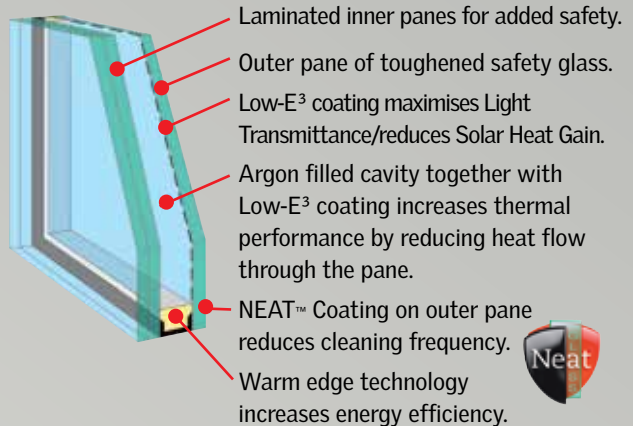
† 2004 glazing variant and Roof Window glazing.

^ Bushfire testing applicable to 2004 glazing variant. Skylight only. Custom-made flashing required. Tested in closed position, fire resistant mesh may be required for opening models. Rigid Sun Tunnel BAL29. Please consult your local council.

‡ Except GPL Roof Window and Sun Tunnel. VCS/VCM cyclone test not performed with screws provided, installation requires the use of #8 roofing screws.

## Glazing Options

### High Performance double glazing (2004)



#### Benefits:

- Radiant heat block: Complete window **approx 75%**
- UV Harmful rays block **approx 99%**
- Noise reduction factor **32 decibels**
- WERS rating **5 stars**
- Double layer of Low-E<sup>3</sup> coating.
- 10 year warranty on insulated glass seal.
- Reduced cleaning frequency.

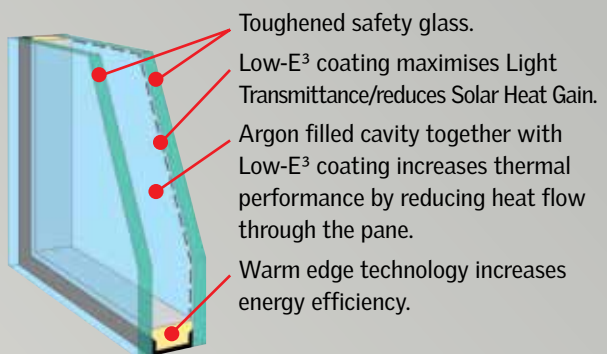
#### Australian Standard AS1288

Laminated glass (2004) must be used for skylights installed 3m or more above floor level.

### NEAT™ Photocatalytic Coating

- Silicone Dioxide/Titanium Dioxide coating reacts with the sun's UV rays to decompose surface organic dirt before rinsing away with the next shower of rain, thereby reducing cleaning frequency.
- The coating also makes the glass surface smoother, so water disperses evenly, sheets off and evaporates quickly; thereby minimising water spotting on the pane.

### Comfort double glazing (2005)



#### Benefits:

- Radiant heat block: Complete window **approx 75%**
- UV Harmful rays block **approx 95%**
- Noise reduction factor **29 decibels**
- WERS rating **5 stars**
- Double layer of Low-E<sup>3</sup> coating.
- 10 year warranty on insulated glass seal.

#### Australian Standard AS1288

Laminated glass (2004) must be used for skylights installed 3m or more above floor level.

GGL/GPL window pane tint (i.e. colouration) is slightly different to skylight window pane tint.

## Pitched Roof Skylights

**VSS** Solar-powered



Page 5



**VS** Manually operated



Page 7



**FS** Fixed (non-opening)



Page 9



## Flat Roof Skylights

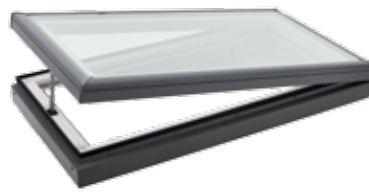
**VCS** Solar-powered



Page 5



**VCM** Manually operated



Page 7



**FCM** Fixed (non-opening)



Page 9



## Sun Tunnels and Roof Windows

**TWF** Flexible



Page 13



**TWR** Rigid

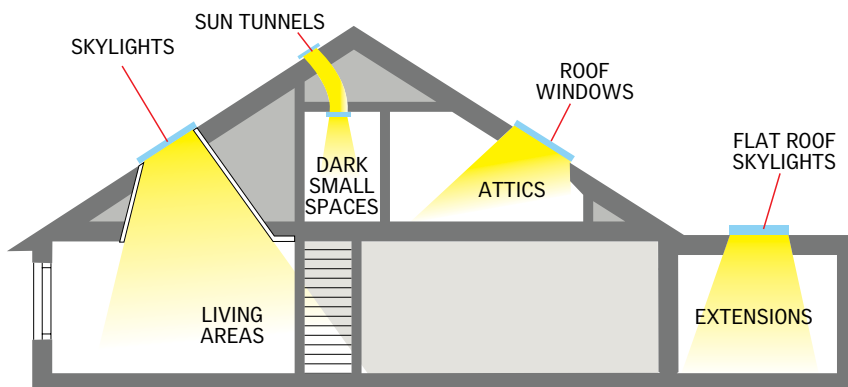


Page 13



Page 11

**GGL**  
White  
pre-painted  
finish



Page 11

**GPL**  
White  
pre-painted  
finish



Easy  
to install-  
no need for  
electrical  
wiring

# Powered by the Sun. Controlled by you.

The ideal solution for out-of-reach situations

## Solar-powered Skylight

- Solar panel mounted below the skylight provides all the power needed to operate the skylight.
- Rain sensor automatically closes skylight with on-set of rain.
- Battery power negates power surges and blackouts.
- Easy to use touch-screen remote-control.



## Pitched Roofs



### VSS

#### Solar-powered skylight

The ultimate skylight that provides abundant daylight and controllable ventilation. Features a solar panel that captures available daylight to recharge a highly efficient, concealed battery-powered operator and control system.

- Wireless installation. No electrician required.
- White painted interior timber frame and sash.
- Outer aluminium cappings (grey).
- Smooth profile sits lower in the roof, does not obstruct the roofline.
- Available in 9 sizes.
- Remote control operation.
- Rain sensor automatically closes the skylight when rain is detected.
- High Performance double glazing as standard, with NEAT™ outer coating: reduces cleaning frequency.
- Includes removable insect screen.
- Complete with flashing for corrugated iron or tile roofs.



#### Technical Performance

U-value†	
Skylight	2.50
Glass only	1.93

Solar Heat Gain Co-efficient†	
Skylight	0.21
Glass only	0.28

Heat block	
Approx	80%

Bushfire^	
BAL	40

Hailstone Test±	
VELUX Simulated Tests	ASTM E822-2009

WERS max 5 stars (summer rating)	
★ ★ ★ ★ ★	

Australian Standards	
AS4285	AS1288
AS3959*	AS1530.1††



## Flat Roofs



### VCS

#### Solar-powered skylight

The ultimate flat roof skylight that provides abundant daylight and controllable ventilation. Features a solar panel that captures available daylight to recharge a highly efficient, concealed battery-powered operator and control system.

- Wireless installation. No electrician required.
- Maintenance Free – White PVC interior frame for a tough, hard wearing interior finish.
- Outer aluminium cappings (grey).
- Available in 6 sizes.
- Remote control operation.
- Rain sensor automatically closes the skylight when rain is detected.
- High Performance double glazing as standard, with NEAT™ outer coating: reduces cleaning frequency.
- Includes removable insect screen.
- Requires custom-made flashing (not supplied by VELUX).



#### Technical Performance

U-value†	
Skylight	2.9‡
Glass only	1.93

Solar Heat Gain Co-efficient†	
Skylight	0.24
Glass only	0.28

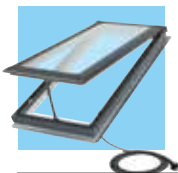
Heat block	
Approx	75%

Bushfire^	
BAL	40

WERS max 5 stars (summer rating)	
★ ★ ★ ★ ★	

Australian Standards	
AS4285#	AS1288
AS3959*	AS1530.1††

‡See installation preparation guide on page 9.



#### Also available

### VSE

#### Electrically operated



- Choice of 9 sizes.
  - 2 metre lead (supplied) plugs into power point.
  - White painted interior timber frame and sash.
  - Insect screen, rain sensor and control pad included.
- Visit [www.velux.com.au](http://www.velux.com.au) for more details.

#### Wireless control system for VSS/VCS/VSE

- Radio frequency controller with advanced control options for both skylight and blind operation.
- Home Automation Systems interface (KLF 200) available (sold separately).



#### Solar Powered Blinds

Blockout – DSH (for VSS/VSE), DSC (for VCS)

Honeycomb – FSCH (for VSS/VSE)

Skylight remote control can be used to operate blinds.

- All blinds are available in white. • Sold separately.
- Easy to fit using the VELUX **Pick & Click!**® System.

\* For roofs below 15° pitch, VSE/VSS skylights need to be raised to 15° and custom flashed. VELUX can assist with technical advice and drawings. (NB: build-up not recommended in Bushfire areas.)

\*\* VELUX recommends VCS is installed with a slight pitch (e.g. 3°-5°) to help prevent condensation build-up and water ponding on the glass.

† U-value (W/m²K) and SHGC data based on AFRC simulations, (complete skylight size; VSS/VSE: 1140mm x 1180mm, VCS: 1275mm x 1275mm).

‡ Cyclone test not performed with screws provided, installation requires #8 roofing screws.

± Hailstone test not performed on VSS solar panel. Solar panel not attached during test.

^ Skylight only. Custom-made flashing required. Skylight tested in closed position (VCS BAL assessed – based on VSS results), additional mesh protection may be required for opening apertures (consult local council). Roof pitch: VSS: 18°-60°, VCS: 0°-60°. †† Assessed in closed position.

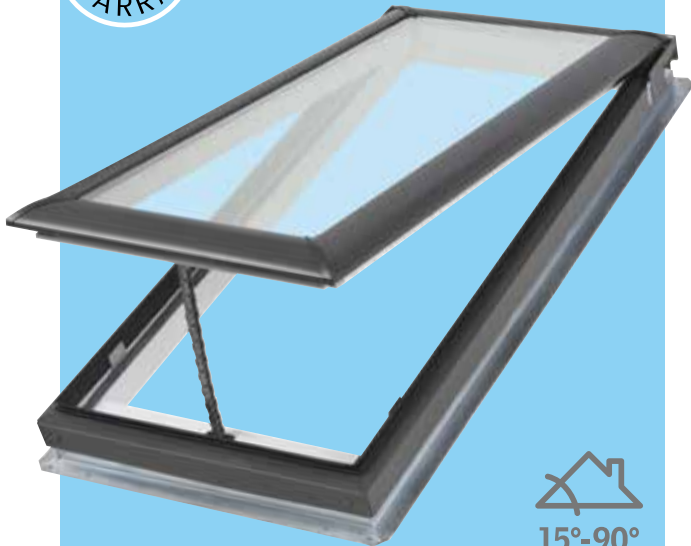
NB: BCA 2013 Vol 1 & 2 regulations (Prevention of Falls from Windows – Balustrades & Barriers): contact VELUX for information relating to restrictor devices for within-reach opening skylights.

Healthy daylight, fresh air  
and sky views





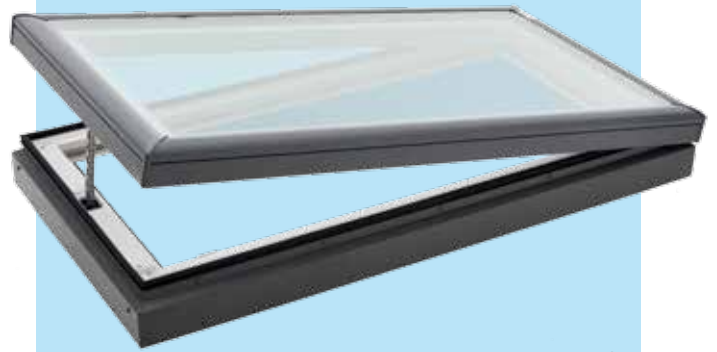
## Pitched Roofs



15°-90°  
INSTALLATION PITCH\*



## Flat Roofs



0°-60°  
INSTALLATION PITCH\*\*

NEW

# VS

## Manually operated

Provides the comfort and energy savings of free daylight and natural ventilation.

- White painted interior timber frame and sash.
- Outer aluminium cappings (grey).
- Operated by winder handle for within-reach situations or by rod for out-of-reach use. (sold separately)
- Smooth profile sits lower in the roof, does not obstruct the roofline.
- Available in 9 sizes.
- Choice of High Performance double glazing (with NEAT™ outer coating: reduces cleaning frequency) or Comfort double glazing (most sizes).
- Includes removable insect screen.
- Complete with flashing for corrugated iron or tile roofs.

### Technical Performance

U-value†	
Skylight	2.50
Glass only	1.93

Solar Heat Gain Co-efficient†	
Skylight	0.21
Glass only	0.28

Heat block	
Approx 80%	

Bushfire^	
BAL40	

Hailstone Test±	
VELUX Simulated Tests ASTM E822-2009	

WERS max 5 stars (summer rating)	
★★★★★	

Australian Standards	
AS4285 AS1288± AS3959^ AS1530.1††	

# VCM

## Manually operated

The VCM opening skylight for flat roofs is the cost effective solution for natural ventilation.

- Maintenance free – White PVC interior frame for a tough interior finish.
- High Performance double glazing as standard, with NEAT™ outer coating: reduces cleaning frequency.
- Includes removable insect screen.
- Outer aluminium cappings (grey).
- Available in 6 sizes.
- Operated by winder handle for within-reach situations or by rod for out-of-reach use. (sold separately)
- Requires custom-made flashing (not supplied by VELUX).

### Technical Performance

U-value†	
Skylight	2.9‡
Glass only	1.93

Solar Heat Gain Co-efficient†	
Skylight	0.24
Glass only	0.28

Heat block	
Approx 75%	

Bushfire^	
BAL40	

WERS max 5 stars (summer rating)	
★★★★★	

Australian Standards	
AS4285# AS1288 AS3959^ AS1530.1††	

‡See installation preparation guide on page 9.

## Blinds for VS

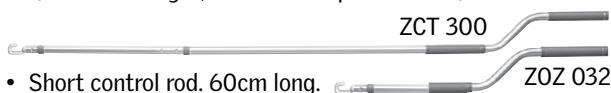
Solar-Powered Blockout – DSH  
Solar-Powered Honeycomb – FSCH

Blinds include wireless, wall-mounted keypad.

- All blinds are available in white. • Sold separately.
- Easy to fit using the VELUX **Pick&Click!** System.

### Manual control options VS

- Winder handle for operating within-reach.
- Telescopic rod control for out-of-reach situations. (145cm in length, extendable up to 285cm.)



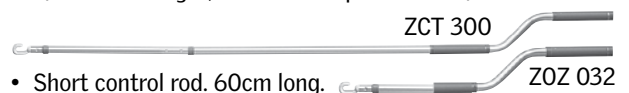
## Blinds for VCM

Solar-Powered Blockout – DSC  
includes wireless, wall-mounted keypad.

- All blinds are available in white. • Sold separately.
- Easy to fit using the VELUX **Pick&Click!** System.

### Manual control options VCM

- Winder handle for operating within-reach.
- Telescopic rod control for out-of-reach situations. (145cm in length, extendable up to 285cm.)



\* For roofs below 15° pitch, VS needs to be raised to 15° and custom flashed. VELUX can assist with technical advice and drawings. (NB: build-up not recommended in Bushfire areas.)

\*\* VELUX recommends VCM is installed with a slight pitch (e.g. 3°-5°) to help prevent condensation build-up and water ponding on the glass.

† U-value (W/m²K) and SHGC data based on AFRC simulations for 2004 glazing, (complete skylight size: VS: 1140mm x 1180mm, VCM: 1275mm x 1275mm).

# VCM Cyclone test not performed with screws provided, installation requires #8 roofing screws.

± AS1288 and hailstone test applicable to 2004 glazing variant only.

^ 2004 glazing Skylight only. Custom-made flashing required. Skylight tested in closed position, additional mesh protection may be required for opening apertures (consult local council). Roof pitch; VS: 18°-75°, VCM: 0°-60°. †† Assessed in closed position. 2004 glazing variant only.

NB: BCA 2013 Vol 1 & 2 regulations (Prevention of Falls from Windows – Balustrades & Barriers): contact VELUX for information relating to restrictor devices for within-reach opening skylights.

# Outstanding daylight provision

where extra ventilation is not required

FCM skylights: Versatile double-glazed alternative to acrylic domes.



Old acrylic domes can be easily damaged.

3 SIZES ARE IDEAL REPLACEMENTS\*\* FOR ACRYLIC DOMES

- FCM 1430 fits equivalent 400x800mm standard dome
- FCM 2230 fits 600x800mm dome
- FCM 3434 fits 900x900mm dome

In simulated tests\* VELUX skylights withstood cricket ball sized hailstones launched at speeds experienced during heavy storms.



See Hail Storm case study.  
[www.velux.com.au](http://www.velux.com.au)

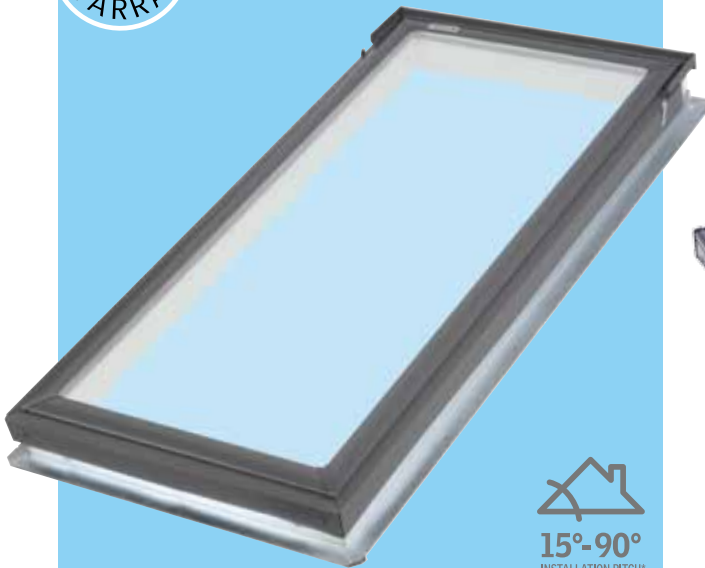
\*\* Custom-made collar adaptor (not supplied) required to fit.

\*ASTM E822-2009 standard practice for determining resistance of Solar Collector Covers to Hail impact with propelled ice balls.

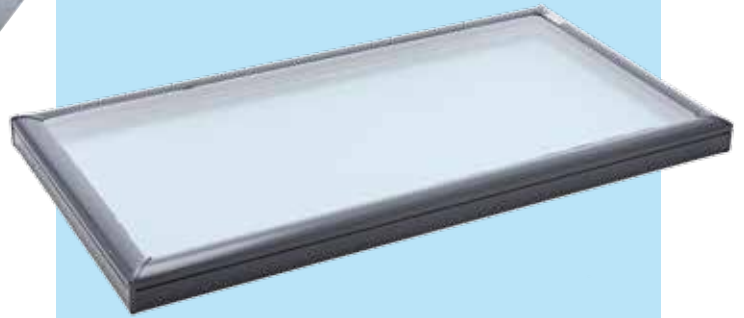




## Pitched Roofs



## Flat Roofs



## FS

### Fixed (non opening)

Cost effective for creating light-filled rooms where adequate ventilation already exists. Energy efficient glazing and the use of blinds ensures heat transference is minimised.

- White painted interior timber frame.
- Outer aluminium cappings (grey).
- Complete with flashing for corrugated iron or tile roofs.
- Choice of High Performance double glazing (with NEAT™ coating: reduces cleaning frequency) or Comfort double glazing (most sizes).
- Smooth profile sits lower in the roof, does not obstruct the roofline.
- Available in 9 sizes.

#### Technical Performance

U-value†	
Skylight	2.60
Glass only	1.93

#### Solar Heat Gain Co-efficient†

Skylight	0.24
Glass only	0.28

#### Heat block

Approx 75%

#### Bushfire^

BAL40

#### Hailstone Test±

VELUX Simulated Tests  
ASTM E822-2009

#### WERS max 5 stars (summer rating)



#### Australian Standards

AS4285 AS1288±  
AS3959^ AS1530.1††

## FCM

### Fixed (non opening)

The brilliantly simple FCM flat roof skylight incorporates the VELUX High Performance double glazed, laminated unit and an all-metal exterior frame.

- Unlike acrylic or polycarbonate – laminated glass will not fade nor discolour over time.
- The smooth exterior gives a lower profile on the roof.
- High Performance double glazing with NEAT™ coating on outer pane: reduces cleaning frequency.
- Approx 99% UV Block.
- Available in 10 sizes.
- Maintenance-free anodized heavy-gauge aluminium frame.
- Requires custom-made flashing (not supplied by VELUX).
- Versatile positioning§: most sizes can be used in portrait, landscape or even "diamond shape" orientation.

#### Technical Performance

U-value†	
Skylight	2.9‡
Glass only	1.93

#### Solar Heat Gain Co-efficient†

Skylight	0.28
Glass only	0.28

#### Heat block

Approx 70%

#### Bushfire^

BAL40

#### Hailstone Test

VELUX Simulated Tests  
ASTM E822-2009

#### WERS max 5 stars (summer rating)



#### Australian Standards

AS4285 AS1288  
AS3959^ AS1530.1

## Blinds for FS

### Manual Blockout – DKD

### Manual Honeycomb – FHCD

requires ZXT 200 rod control for out-of-reach.



### Solar-powered Blockout – DSD

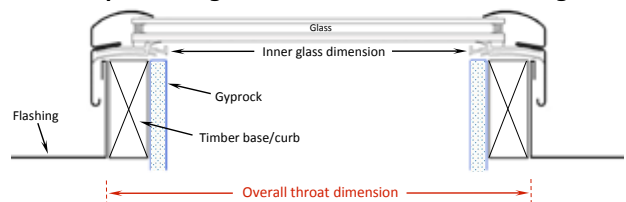
### Solar-powered Honeycomb – FSCD

includes wireless, wall-mounted keypad.



- All blinds are available in white. • Sold separately.
- Easy to fit using the VELUX **Pick&Click!**® System.

## Preparation guide for custom-made flashing



Throat on custom-made flashing must not exceed 35mm – otherwise Gyprock, when installed, will encroach upon glass area  
 ‡Skylight must be installed with timber hob and Gyprock, as shown (typical installation), to achieve 2.9 U-value rating.

\* For roofs below 15° pitch, FS needs to be raised to 15° and custom flashed. VELUX can assist with technical advice and drawings. (NB: build-up not recommended in Bushfire areas.)

\*\* VELUX recommends FCM is installed with a slight pitch (e.g. 3°-5°) to help prevent condensation build-up and water ponding on the glass.

± AS1288 and hailstone test applicable to 2004 glazing variant only.

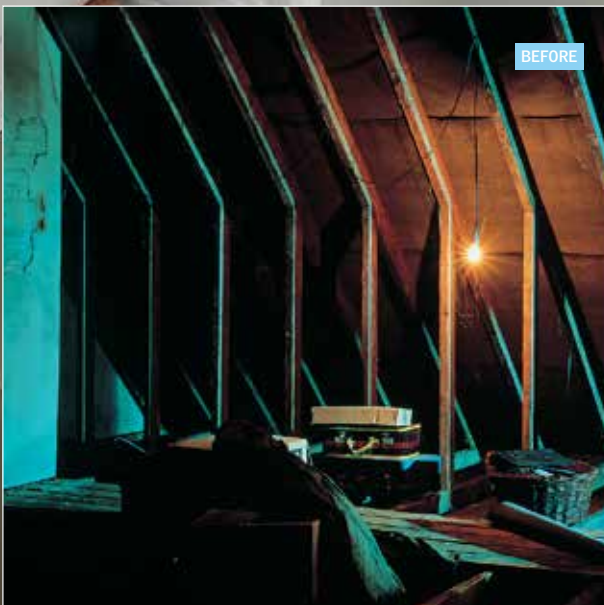
† U-value (W/m²K) and SHGC data based on AFRC simulations for 2004 glazing, (complete skylight size; FS: 1140mm x 1180mm, FCM: 1275mm x 1275mm).

^ 2004 glazing Skylight only. Custom-made flashing required. Roof pitch; FS: 18°-75°, FCM: 0°-60°.

†† 2004 glazing variant only.

§ FCM 2270 not recommended for "landscape" orientation.

Transform wasted attic space into fantastic loft living





## For Attic Conversions



for within-reach only



15°-90°  
INSTALLATION PITCH\*

## GGL

### Centre-Pivot roof window

Beautifully engineered for a lifetime of use, the GGL is ideal for within-reach attic situations.

- A short pull on the top control bar allows filtered background ventilation even while the window remains shut.
- A second pull on the control bar allows the window to rotate for maximum ventilation – and up to 180° for cleaning the outer pane from inside the room.
- Quality white painted pine sash & frame.
- Complete with flashing for corrugated iron or tile roofs.
- Available in 5 sizes.
- Laminated double glazing as standard.

Technical Performance	
U-value†	
Roof Window	1.30
Glass only	1.00
Solar Heat Gain Co-efficient†	
Skylight	0.31
Glass only	0.30
Heat block	
Approx 70%	
UV Harmful Rays Block	
Approx 95%	
Bushfire^	
BAL40	
WERS max 5 stars (summer rating)	
★★★★★	
Australian Standards	
AS4285	AS1288
AS3959^	AS1530.1††



## For Attic Conversions



for within-reach only



15°-55°  
INSTALLATION PITCH\*

## GPL

### Dual action roof window

Developed for use in attics with shallower pitched roofs to maximise roof top views. For within-reach situations only.

- Opens in two ways: the bottom handle allows for top-hung opening; a short pull on the top control bar allows filtered background ventilation even while the window remains shut.
- A second pull on the control bar allows the window to rotate for maximum ventilation – and up to 180° for cleaning the outer pane from inside the room.
- Quality white painted pine sash & frame.
- Complete with flashing for corrugated iron or tile roofs.
- Available in 5 sizes.
- Laminated double glazing as standard.
- Insect screen available as extra.

Technical Performance	
U-value†	
Roof Window	1.30
Glass only	1.00
Solar Heat Gain Co-efficient†	
Skylight	0.31
Glass only	0.30
Heat block	
Approx 70%	
UV Harmful Rays Block	
Approx 95%	
Bushfire^	
BAL40	
WERS max 5 stars (summer rating)	
★★★★★	
Australian Standards	
AS4285†	AS1288
AS3959^	AS1530.1††

## Blinds for GGL/GPL

Manual Blockout – DKL    Manual Honeycomb – FHC

- All blinds available in white • Easy to fit using the VELUX **Pick&Click!®** System.

**NB:** New VELUX blinds and flashings do not fit GGL/GHL/GPL windows purchased prior to June 2015.

## Opening Restrictors

BCA Vol 1 & 2 regulations (Prevention of Falls from Windows – Balustrades & Barriers): contact VELUX for information relating to restrictor devices for within-reach opening roof windows.

\* For roofs below 15° pitch, roof windows need to be raised to 15° and custom flashed. VELUX can assist with technical advice and drawings. (NB: build-up not recommended in Bushfire areas.)

† U-value (W/m²K) and SHGC calculated according to EN 14351-1:2006 + A2:2016 (window size 1140mm x 1400mm).

^ Bushfire testing applicable to GGL in roof pitch 18°-75° and GPL in roof pitch 18°-55°. Roof window only. Custom-made flashing required. Roof window tested in closed position, additional mesh protection may be required for opening apertures (consult local council).

‡ Except Cyclonic.

†† Assessed in closed position.



## VELUX Blinds – effective light control

VELUX has a choice of blinds that provide different levels of light control. Tailor-made to fit perfectly to each size of skylight or roof window, they are easy to install and are supplied with aluminium side channels that allow the blind to be positioned at any point down the window.



### Blockout blinds



Provide near complete blockout from light. Manual or solar powered versions available.

- Blind can be stopped at any position on the window.
- Reduce light by approx 100%.
- Reduce heat by approx 40%\*.
- Available in white only.

### Honeycomb blinds



A stylish and modern blind providing protection from heat and glare while providing a near complete blockout from light. Manual or solar powered versions available.

- Honeycomb structured material.
- Reduce light by approx 95%.
- Reduce heat by approx 60%\*.
- Available in white only.

### Pick & Click!®



The innovative VELUX **Pick & Click!**<sup>†</sup> system makes installing our blinds a snap!

Installation is simple if window is within easy reach.

### Blind options

Blind to fit	Manual Blockout	Manual Honeycomb	Solar Powered Blockout	Solar Powered Honeycomb
FS	✓ <sup>^</sup>	✓ <sup>^</sup>	✓ <sup>**</sup>	✓ <sup>**</sup>
VS			✓ <sup>**</sup>	✓ <sup>**</sup>
VSE/S			✓ <sup>†</sup>	✓ <sup>†</sup>
VCS			✓ <sup>†</sup>	
VCM			✓ <sup>**</sup>	
GGL	✓	✓		
GPL	✓	✓		

<sup>^</sup> Manual Blinds for Fixed Skylights require ZXT 200 rod control for out-of-reach situations.

<sup>\*\*</sup> Solar powered blinds include wireless wall-mounted keypad (KLI 110).

<sup>†</sup> Uses VSS/VSE/VCS remote control (see page 5).

Blinds are not available for FCM flat roof skylights.

NB: New VELUX blinds do not fit VELUX Skylights manufactured prior to March 2010/ VELUX Roof Windows purchased prior to June 2015. Blinds for older models must be ordered accordingly – contact VELUX for details.

\* Based on VELUX internal testing with 3076 model roof window.

# Sun Tunnels

## Time-saving design

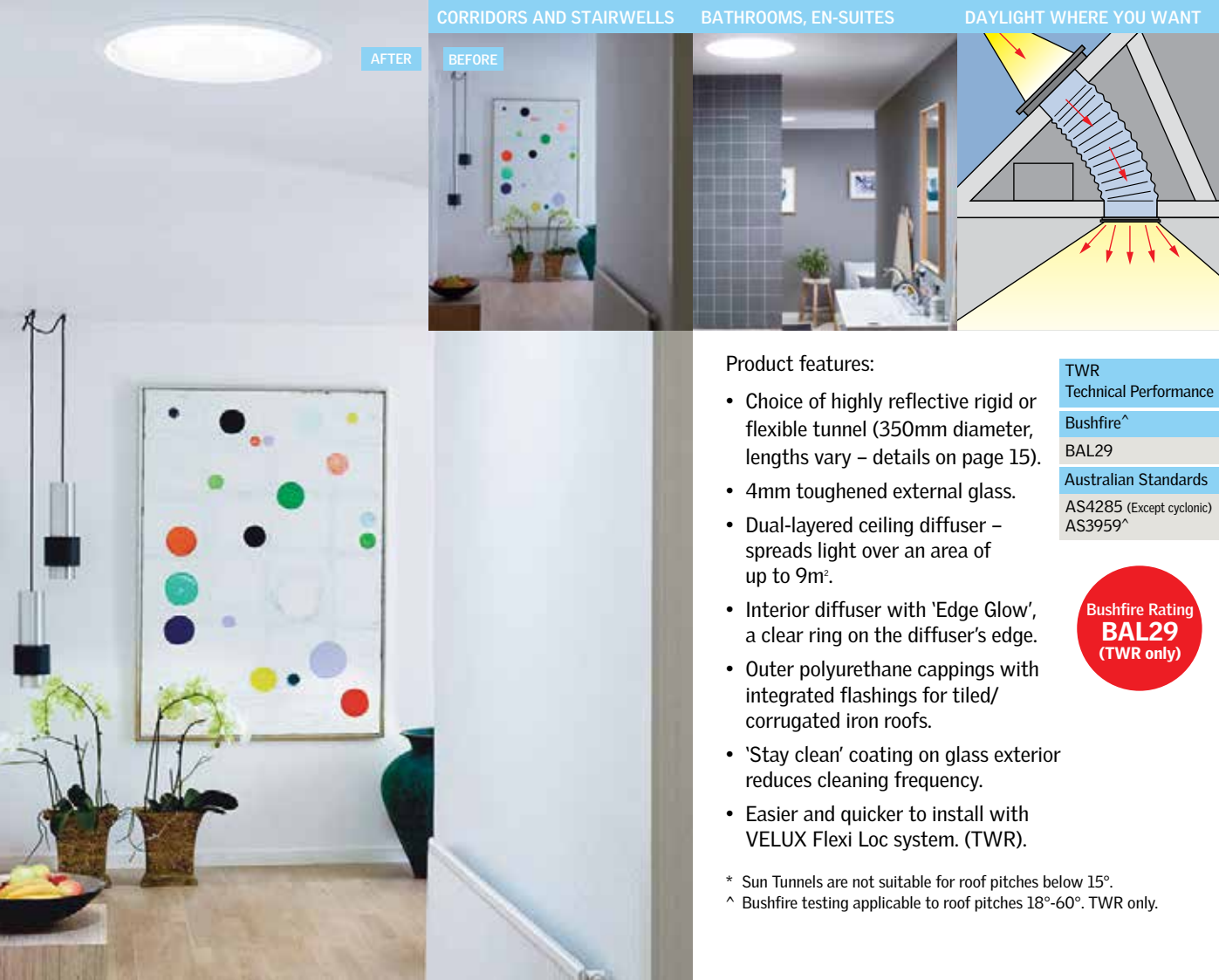
The VELUX Sun Tunnel has been designed to make installation quick and easy. Tube assembly is simple so little time is spent in the roof cavity.

The VELUX flexible (TWF) and rigid (TWR) Sun Tunnels provide installation flexibility. Rigid tunnels are most suited to roof spaces with minimal obstructions. They have a highly reflective shaft to achieve maximum light output. Flexible tunnels can be used when obstructions in the roof cavity prevent the use of rigid Sun Tunnels.

VELUX Sun Tunnels for pitched roofs are designed to provide natural light into corridors, stairwells, bathrooms and cupboards; where installation of a VELUX Skylight is not possible.



(TWR pictured)



CORRIDORS AND STAIRWELLS

BATHROOMS, EN-SUITES

DAYLIGHT WHERE YOU WANT

AFTER

BEFORE

### Product features:

- Choice of highly reflective rigid or flexible tunnel (350mm diameter, lengths vary – details on page 15).
- 4mm toughened external glass.
- Dual-layered ceiling diffuser – spreads light over an area of up to 9m<sup>2</sup>.
- Interior diffuser with 'Edge Glow', a clear ring on the diffuser's edge.
- Outer polyurethane cappings with integrated flashings for tiled/corrugated iron roofs.
- 'Stay clean' coating on glass exterior reduces cleaning frequency.
- Easier and quicker to install with VELUX Flexi Loc system. (TWR).

TWR
Technical Performance
Bushfire <sup>^</sup>
BAL29
Australian Standards
AS4285 (Except cyclonic)
AS3959 <sup>^</sup>



\* Sun Tunnels are not suitable for roof pitches below 15°.

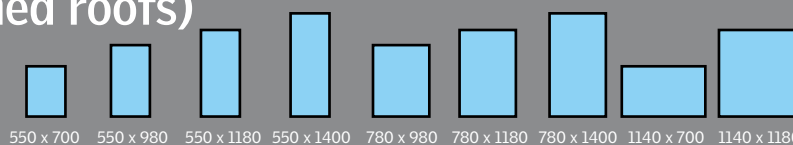
<sup>^</sup> Bushfire testing applicable to roof pitches 18°-60°. TWR only.

# Opening Skylights (pitched roofs)



15°-90° (VSS 15°-60°)

Overall frame dimension w x h mm ▶



## Manual Page 5

Size code ▶

C01 C04 C06 C08 M04 M06 M08 S01 S06

	(RRP) \$	C01	C04	C06	C08	M04	M06	M08	S01	S06
VS 2005 Comfort double glazing	\$	826	835	-	945	960	-	1,160	-	-
VS 2004 High Performance double glazing	\$	871	888	950	1,002	1,030	1,120	1,210	1,098	1,364

Price includes: Flashing for single skylight in corrugated iron or tile roof (not suitable for metal profiles such as Klip-Lok, Trimdek), insect screen and operating hook.

NB: Operating Rod (ZCT 300, ZOZ 032) for out-of-reach operation and winder handle (ZZZ 201 for within-reach operation) to be purchased separately.

For roofs below 15° pitch, skylights need to be raised to 15° and custom flashed. VELUX can assist with technical advice and drawings.

NB: Skylights can only be installed as per orientation depicted above.

## Solar/Electric Page 5

Size code ▶

C01 C04 C06 C08 M04 M06 M08 S01 S06

High Performance double glazing

	(RRP) \$	C01	C04	C06	C08	M04	M06	M08	S01	S06
VSS Solar skylight	\$	2,053	2,080	2,140	2,198	2,227	2,323	2,420	2,318	2,580
VSE Electric skylight	\$	1,910	1,934	1,990	2,045	2,072	2,161	2,249	2,157	2,400

Price includes: Flashing for single skylight in corrugated iron or tile roof (not suitable for metal profiles such as Klip-Lok, Trimdek), insect screen, pre installed motor, remote control and rain sensor, solar panel included with VSS. No additional electrical control system required when adding blinds. For roofs below 15° pitch, skylights need to be raised to 15° and custom flashed. VELUX can assist with technical advice and drawings. NB: Skylights can only be installed as per orientation depicted above.

## Blinds (VS, VSS & VSE) Page 12

Size code ▶

C01 C04 C06 C08 M04 M06 M08 S01 S06

	(RRP) \$	C01	C04	C06	C08	M04	M06	M08	S01	S06
DSH Solar Blockout <sup>^</sup> , White (VS, VSS, VSE)	\$	479	479	479	479	489	489	489	499	499
FSCH Solar Honeycomb <sup>^</sup> , White (VS, VSS, VSE)	\$									

**NEW VELUX blinds and flashings do not fit VELUX Skylights manufactured prior to March 2010 and must be ordered accordingly.**

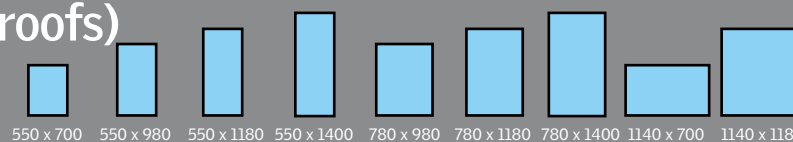
<sup>^</sup>Wireless wall-mounted keypad supplied.

# Fixed Skylights (pitched roofs)



15°-90°

Overall frame dimension w x h mm ▶



## Fixed Page 7

Size code ▶

C01 C04 C06 C08 M04 M06 M08 S01 S06

	(RRP) \$	C01	C04	C06	C08	M04	M06	M08	S01	S06
FS 2005 Comfort double glazing	\$	397	489	-	606	574	-	690	-	-
FS 2004 High Performance double glazing	\$	491	559	638	710	680	762	846	759	892

Price includes: Flashing for single skylight in corrugated iron or tile roof (not suitable for metal profiles such as Klip-Lok, Trimdek). For roofs below 15° pitch, skylights need to be raised to 15° and custom flashed. VELUX can assist with technical advice and drawings. NB: Skylights can only be installed as per orientation depicted above.

## Blinds (FS) Page 12

Size code ▶

C01 C04 C06 C08 M04 M06 M08 S01 S06

	(RRP) \$	C01	C04	C06	C08	M04	M06	M08	S01	S06
FHCD Manual Honeycomb <sup>**</sup> , White (FS)	\$	175	190	200	210	200	220	235	210	250
DKD Manual Blockout <sup>**</sup> , White (FS)	\$									
FSCD Solar Honeycomb <sup>^</sup> , White (FS)	\$	479	479	479	479	489	489	489	499	499
DSD Solar Blockout <sup>^</sup> , White (FS)	\$									

**NEW VELUX blinds and flashings do not fit VELUX Skylights manufactured prior to March 2010 and must be ordered accordingly.**

<sup>\*\*</sup>Requires ZXT 200 control rod for out-of-reach situations (sold separately). NB: VELUX recommends Solar Blinds for exceptionally high situations.

<sup>^</sup>Wireless wall-mounted keypad supplied.

Price list effective February 2018. All prices are supply only and include GST. Prices subject to change without notice. All prices quoted are Recommended Retail Prices (RRP) only.

For multiple skylights installed side by side, contact VELUX for information and pricing on combination flashing.

Delivery time (in working days)*	NSW 1-2	VIC 1-2	SA 3	ACT 1-2	QLD 2-5	NT 3-7	TAS 3-5	WA 1-2 <sup>†</sup>
----------------------------------	---------	---------	------	---------	---------	--------	---------	---------------------

\* Metropolitan areas only. Subject to order being received by VELUX before 12 EST noon. Add extra working day to delivery time for orders received by VELUX after 12 EST noon.

<sup>†</sup> Subject to availability at Perth warehouse.

# Skylights (flat roofs)



Overall throat dimension w x h mm ▶



**NEW**  
**NEW**

High Performance double glazing	Size code ▶	1430	2222	2230	2234	2246	2270	3030	3046	3434	4646
VCS Solar skylight	(RRP) \$	-	2024	-	2140	2280	-	2288	2400	-	2515
VCM Manual skylight	(RRP) \$	-	880	-	950	1050	-	1100	1195	-	1400
FCM Fixed skylight	(RRP) \$	263	286	310	330	373	673	361	460	410	509

NB: VCM/VCS can only be installed as per orientation depicted above. FCM can be positioned in portrait or landscape (FCM 2270 must be in portrait orientation).  
NB: Operating Rod (ZCT 300, ZOZ 032) for VCM out-of-reach operation and winder handle (ZZZ 212 for within-reach operation) to be purchased separately.  
Custom flashings are required for VCS/VCM/FCM (not provided) – VELUX can assist with technical advice and drawings.

Blinds (VCS, VCM) <a href="#">Page 7</a>	Size code ▶	1430	2222	2230	2234	2246	2270	3030	3046	3434	4646
DSC Solar Blockout <sup>^</sup> , White (VCS, VCM)	(RRP) \$	-	479	-	479	479	-	489	489	-	529

<sup>^</sup>Wireless wall-mounted keypad supplied. NB: Blinds are not available for FCM Skylights.

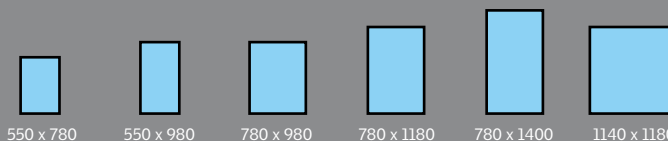
# Opening Roof Windows

Recommended for within-reach situations only



15°-90° (GPL 15°-55°)

Overall frame dimension w x h mm ▶



Manual <a href="#">Page 11</a>	Size code ▶	CK02	CK04	MK04	MK06	MK08	SK06
	Old Size code (pre June 2015) ▶	C02	C04	M04	M06	M08	-
GGL Centre-pivot, Laminated double glazing	(RRP) \$	690	730	845	-	1,020	1,260
GPL Dual action, Laminated double glazing	(RRP) \$	-	810	919	1,009	1,130	1,321

Price includes: Flashing for single window in corrugated iron or tile roof (not suitable for metal profiles such as Klip-Lok, Trimdek). For roofs below 15° pitch, roof windows need to be raised to 15° and custom flashed. VELUX can assist with technical advice and drawings. Roof Windows can only be installed as per orientation depicted above.

ZIL Insect Screens (For GPL)	(RRP) \$	239	239	294	294	294	327
------------------------------	----------	-----	-----	-----	-----	-----	-----

ZIL Insect Screen is fitted to ceiling to cover plaster reveal. Suitable for within-reach applications only. NB: side channel length to be cut to size.

Blinds <sup>^</sup> (GGL, GPL) <a href="#">Page 12</a>	Size code ▶	CK02	CK04	MK04	MK06	MK08	SK06
DKL Manual Blockout, White (GGL, GPL)	(RRP) \$	176	189	195	208	228	243
FHC Manual Honeycomb, White (GGL, GPL)	(RRP) \$						

<sup>^</sup> NEW VELUX blinds and flashings do not fit GGL/GHL/GPL windows purchased prior to June 2015 and must be ordered accordingly.

# Electric and Rod Controls [Page 5](#)

**NEW**

ZZZ 201	Winder handle (white) to operate VS openable skylights within reach		(RRP) \$ 36
ZZZ 212	Winder handle (white) to operate VCM openable skylights within reach		(RRP) \$ 36
ZOZ 032	Short rod control (60cm) to operate within reach, manual openable skylights		(RRP) \$ 43
ZCT 300	Extendable rod control to operate manual openable skylights. 145cm – 285cm length		(RRP) \$ 58
ZXT 200	Extendable rod control to operate manual fixed skylight blinds. 100cm – 180cm length		(RRP) \$ 50
KLR 200	Touch screen remote control with programmable functionality		(RRP) \$ 199
KLF 200	Interface Unit. Connect to building managements systems, sensors and switches. WiFi Capable. Individual control of 5 products (or groups), up to 200 products in total.		(RRP) \$ 545

# Sun Tunnels [Page 13](#)



15°-60°

Tunnel diameter 350mm



460 x 460

TWF OK14	Sun Tunnel with <b>flexible</b> shaft – 2200mm long, 350mm diameter	(RRP) \$ 330
TWR OK14	Sun Tunnel with <b>rigid</b> shaft – 1650mm long, 350mm diameter	(RRP) \$ 549
ZTR OK14	<b>Rigid</b> extension – 1240mm (NOT suitable for TWF)	(RRP) \$ 220

Packages complete with integrated flashing for tiled or corrugated iron roofs (not suitable metal profiles such as Klip-Lok, Trimdek), tunnel and ceiling diffuser. Sun Tunnels are not suitable for roof pitches below 15°.

Price list effective February 2018. All prices are supply only and include GST. Prices subject to change without notice. All prices quoted are Recommended Retail Prices (RRP) only.

Delivery time (in working days)*	NSW 1-2	VIC 1-2	SA 3	ACT 1-2	QLD 2-5	NT 3-7	TAS 3-5	WA 1-2†
----------------------------------	---------	---------	------	---------	---------	--------	---------	---------

\* Metropolitan areas only. Subject to order being received by VELUX before 12 EST noon. Add extra working day to delivery time for orders received by VELUX after 12 EST noon.  
† Subject to availability at Perth warehouse.

**VELUX SKYLIGHTS & ROOF WINDOWS  
SIZE AVAILABILITY (mm's)**

700	VS VSE VSS FS <b>C01</b>			VS VSE VSS FS <b>S01</b>
780	GGL <b>CK02</b>			
980	VS VSE VSS FS <b>C04</b> GGL GPL <b>CK04</b>	VS VSE VSS FS <b>M04</b> GGL GPL <b>MK04</b>		
1180	VS VSE VSS FS <b>C06</b>	VS VSE VSS FS <b>M06</b> GPL <b>MK06</b>		VS VSE VSS FS <b>S06</b> GGL GPL <b>SK06</b>
1400	VS VSE VSS FS <b>C08</b>	VS VSE VSS FS <b>M08</b> GGL GPL <b>MK08</b>		
	◀ 550 ▶	◀ 780 ▶	◀ 1140 ▶	

**VELUX FLAT ROOF GLAZED SKYLIGHTS  
SIZE AVAILABILITY (mm's)**

665		FCM VCS VCM <b>2222</b>		
870	FCM <b>1430</b>	FCM <b>2230</b>	FCM VCS VCM <b>3030</b>	
970		FCM VCS VCM <b>2234</b>	FCM <b>3434</b>	
1275		FCM VCS VCM <b>2246</b>	FCM VCS VCM <b>3046</b>	FCM VCS VCM <b>4646</b>
1885		FCM <b>2270</b>	<p>3 SKYLIGHT SIZES ARE IDEAL REPLACEMENTS FOR ACRYLIC DOMES</p> <ul style="list-style-type: none"> <li>• FCM 1430 fits equivalent 400x800mm standard dome</li> <li>• FCM 2230 fits 600x800mm dome</li> <li>• FCM 3434 fits 900x900mm dome</li> </ul> <p>See P9 for details.</p>	
	◀ 460 ▶	◀ 665 ▶	◀ 870 ▶	◀ 970 ▶

*Bringing light to life*

VELUX Australia Pty Ltd  
78 Henderson Road, Alexandria NSW 2015

Customer Services: Tel: 1300 859 856

Fax: (02) 9550 3289

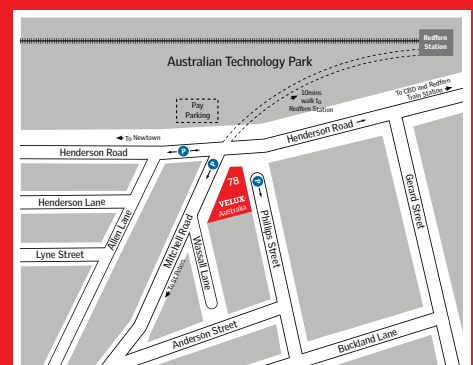
E-mail: [customer.service@velux.com.au](mailto:customer.service@velux.com.au)

 @veluxaustralia

[www.velux.com.au](http://www.velux.com.au)

**VELUX**®

**SYDNEY HEAD OFFICE & SHOWROOM**



**OPENING TIMES:**  
Sydney Head Office: 8am-5pm (Mon-Fri)  
Showroom: 8.30am-4.30pm (Mon-Fri)

The utmost care has been taken to provide accurate information. However, VELUX shall not be held responsible for any consequences arising from any errors or omissions in the catalogue nor for any damage or accidental loss resulting from the use of the information herein. VELUX reserves the right to modify, through development improvements, the products displayed in this brochure without notification.  
©2018 VELUX GROUP, VELUX®, VELUX logo are registered trademarks. V-AUS 0218